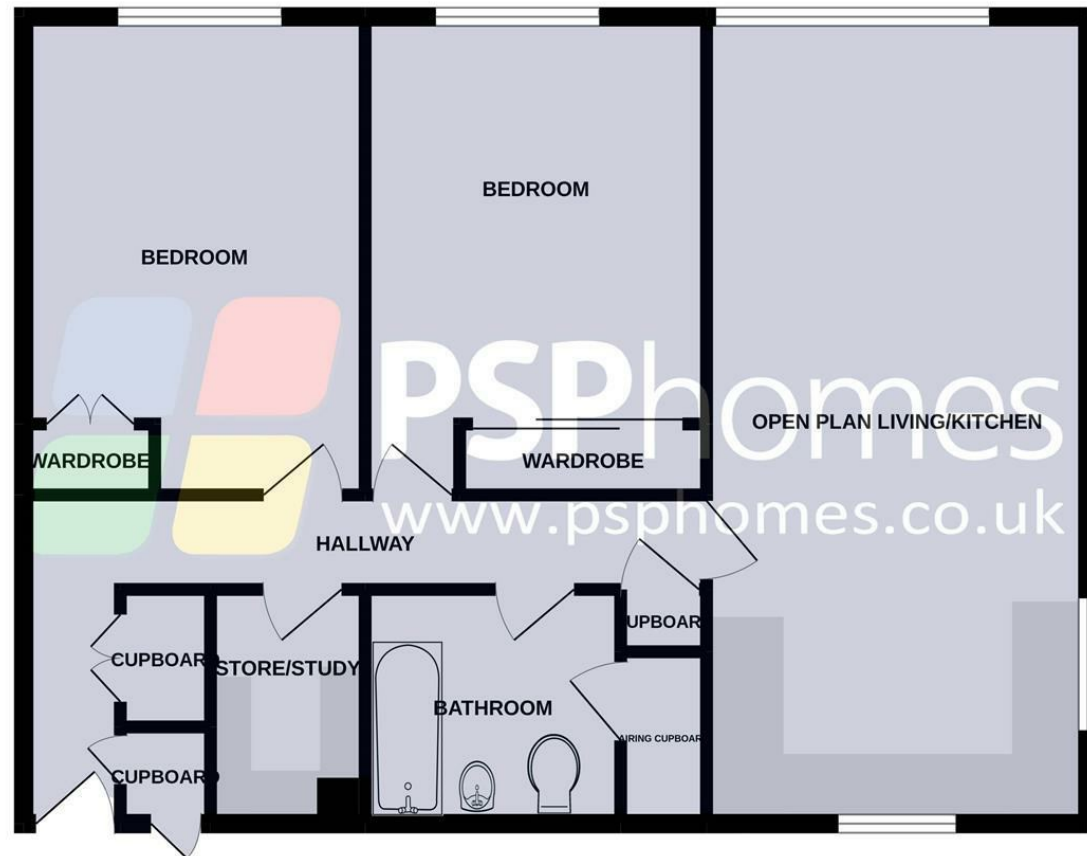
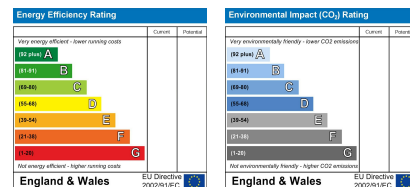


FIRST FLOOR  
799 sq.ft. (74.3 sq.m.) approx.



TOTAL FLOOR AREA: 799 sq.ft. (74.3 sq.m.) approx.  
Plans for illustration purposes only. Intending purchasers should check measurements personally.  
Made with Metropix ©2022



  
BRITISH  
PROPERTY  
AWARDS  
2022  
★★★★★  
GOLD WINNER  
PSP HOMES  
SOUTH ENGLAND  
(OVERALL)



1 Kipling Court, Winnals Park Paddockhall Road, Haywards Heath, Sussex, RH16 1EX

Price £300,000 Leasehold - Share of Freehold



[psphomes.co.uk](http://psphomes.co.uk)

[/PSPhomes](https://www.facebook.com/PSPhomes)

[@PSPhomes](https://www.instagram.com/PSPhomes)

VIEWING BY APPOINTMENT WITH PSP HOMES

3 Muster Green South, Haywards Heath, West Sussex, RH16 4AP. TELEPHONE 01444 416999

Much care is taken in the preparation of our particulars, but we cannot guarantee the information given is accurate.

Property details are issued a general guide only and may not form any part of an offer or contract. We recommend intending purchasers check details personally.



[@PSPhomes](https://www.instagram.com/PSPhomes)

[/PSPhomes](https://www.facebook.com/PSPhomes)

[psphomes.co.uk](http://psphomes.co.uk)

1 Kipling Court, Winnals Park Paddockhall Road, Haywards Heath, Sussex, RH16 1EX